

Up Mehdau

$\text{♩} = 252$

A ($\text{♩} = 126$)

5/4 (7/4 + 8/4)
(Part 4)

5 *f*

7

9 **B**

11

13

15

17 **C** Floaty Time
sub. p

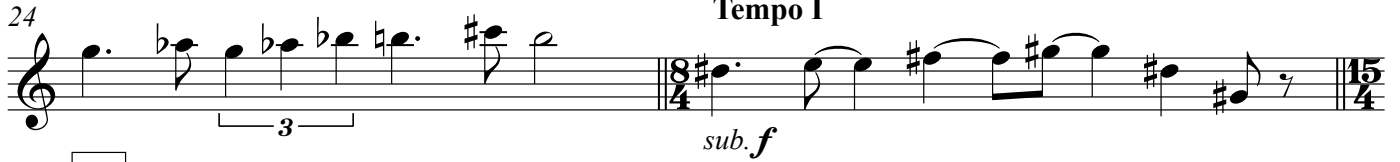
19

21

H-2
Part 3 in B \flat

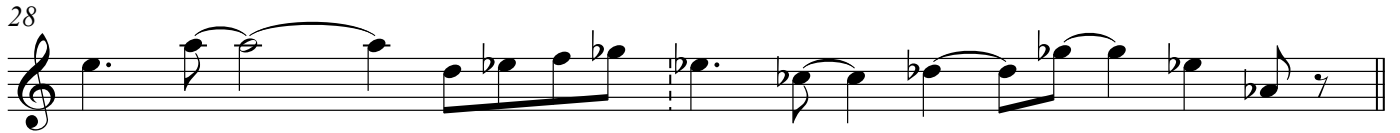
2

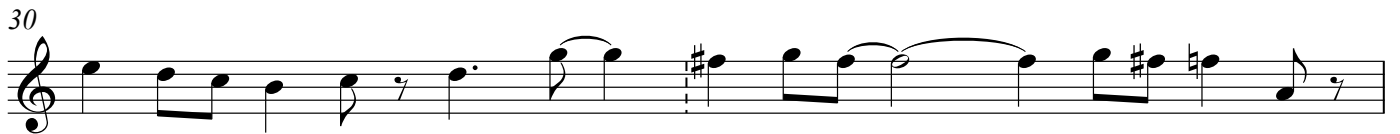
Tempo I

24 

D

26 

28 

30 

32 

34 

E

37 

39 

41 

43 

H-2
Part 3 in B \flat

45 **F**

47

49

51 **G**

f *sub. p*

53

55 **H**

sf-m *sf-m sf-m*

59 **I**

f *sub. p*

61

63

65

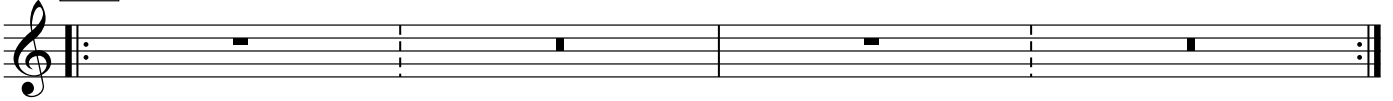
67 **J** Part 4 Solo

f *p* *dim.*

H-2
Part 3 in B \flat

4

71 **K** Open



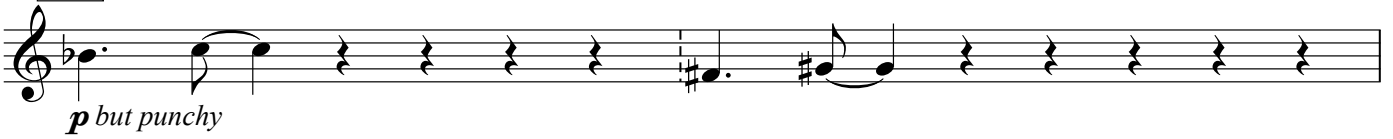
75 **L** (Solo Continues)



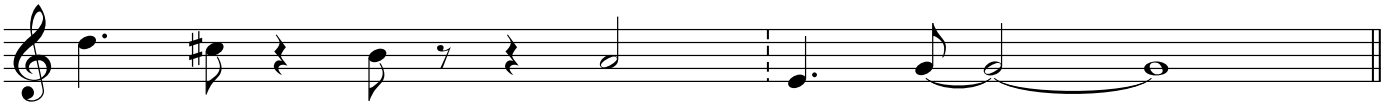
78



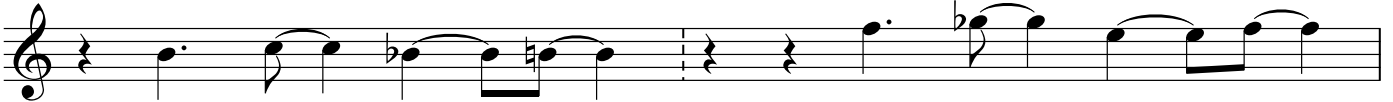
81 **M**



83



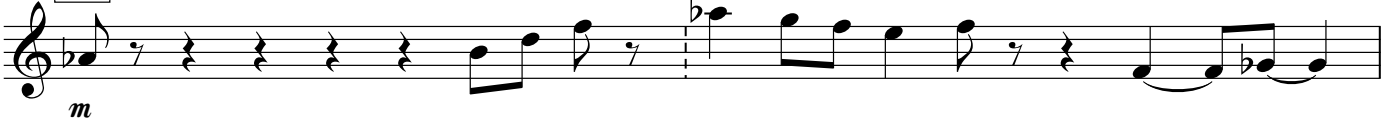
85



87



89 **N**



91



(5)

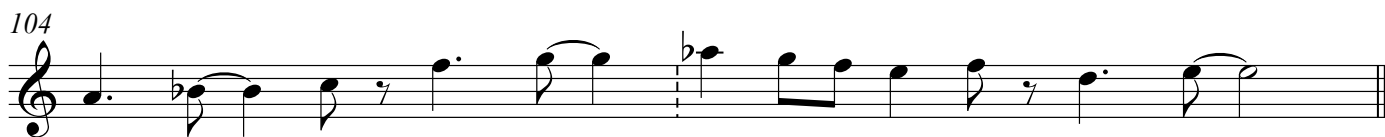
93  Musical staff starting at measure 93, featuring eighth and sixteenth notes with various accidentals.

95  Musical staff starting at measure 95, featuring quarter and eighth notes with a key signature change to two flats.

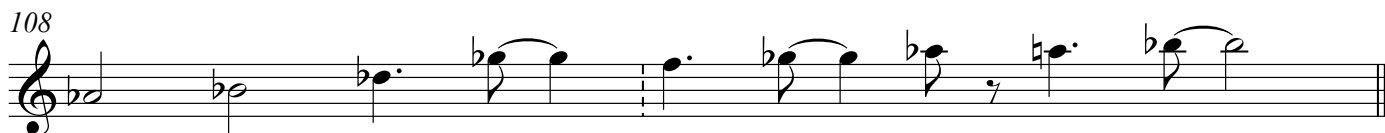
97 **O**  Musical staff starting at measure 97, marked with a boxed 'O', featuring quarter and eighth notes.

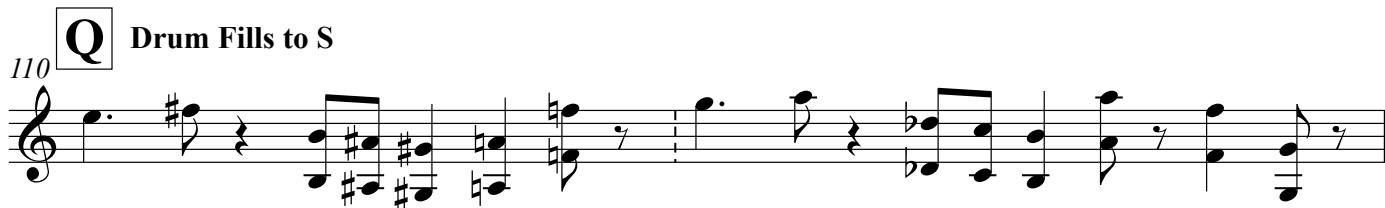
99  Musical staff starting at measure 99, ending with a double bar line and a 15/4 time signature. **(End Solo)**

102 **P**  Musical staff starting at measure 102, marked with a boxed 'P' and a forte 'f' dynamic, featuring a 15/4 time signature and quarter notes.

104  Musical staff starting at measure 104, featuring quarter and eighth notes.

106  Musical staff starting at measure 106, featuring quarter and eighth notes.

108  Musical staff starting at measure 108, featuring quarter and eighth notes.

110 **Q** **Drum Fills to S**  Musical staff starting at measure 110, marked with a boxed 'Q' and 'Drum Fills to S', featuring quarter notes and rests.

H-2
Part 3 in B \flat

6

112

114

116

118 **R**

dim.

122

dim.

128 **S**

f

132

134

136

(omit if out of range)

139

(5)

142

Rit.

(5)